



Ente Ospedaliero Cantonale

Chirurgia Mininvasiva



eoc



Ente Ospedaliero Cantonale

Chirurgia Mininvasiva



eoc

Enhanced Recovery After Surgery

informazione preoperatoria

stato nutrizionale

carico glicidico preoperatorio

chirurgia mininvasiva

no drenaggi no CV no SNG

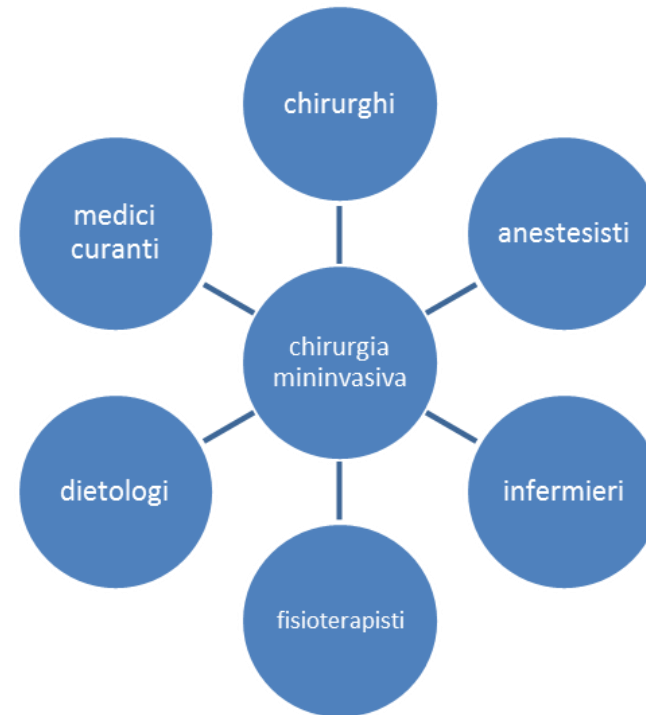
analgesia multimodale

normotermia

prevenzione sovraccarico idrico

alimentazione precoce

mobilizzazione precoce



Chirurgia Mininvasiva Esofagogastrica

funzionale

GERD

ernia iatale

diverticolo

acalasia

gastroparesi

neoplastica

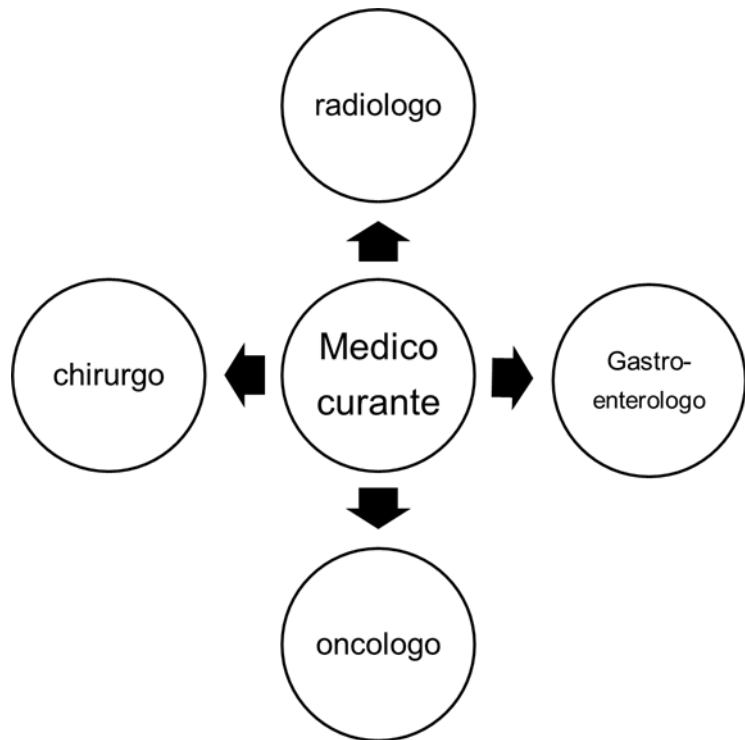
esofagea

gastrica

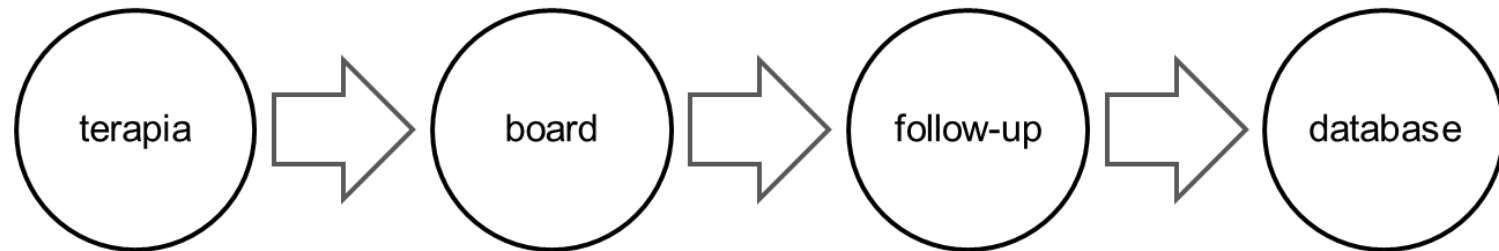
precancerosi

Percorso diagnostico-terapeutico

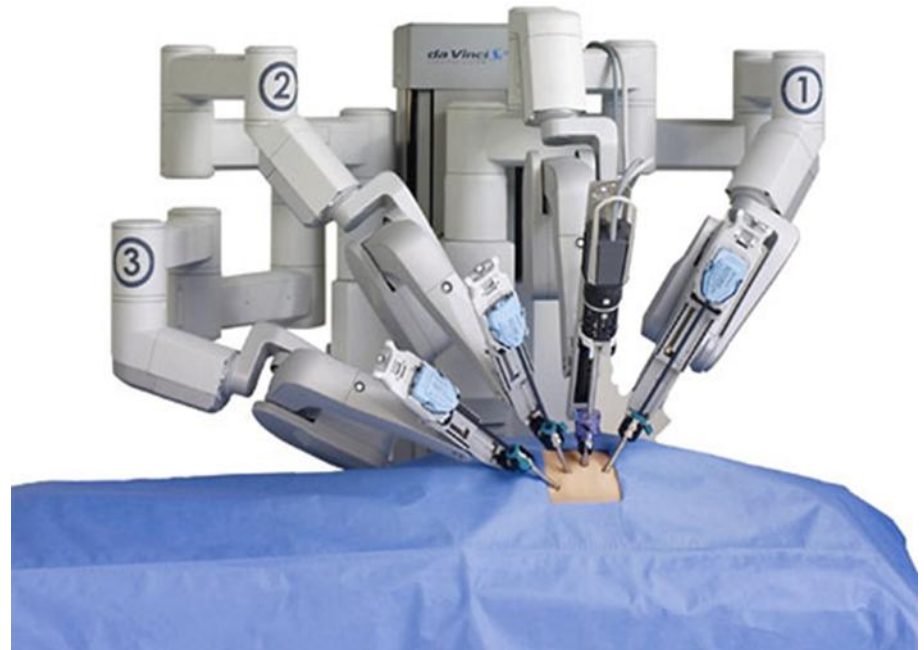
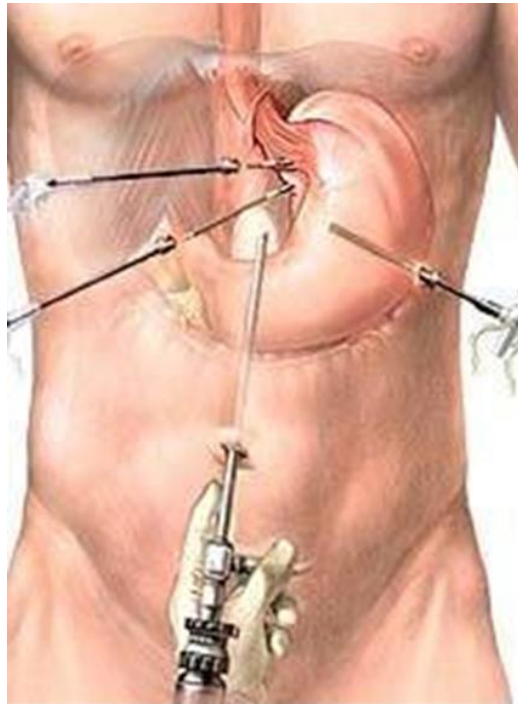
standardizzato
multidisciplinare
evidence-based
adattato
condiviso



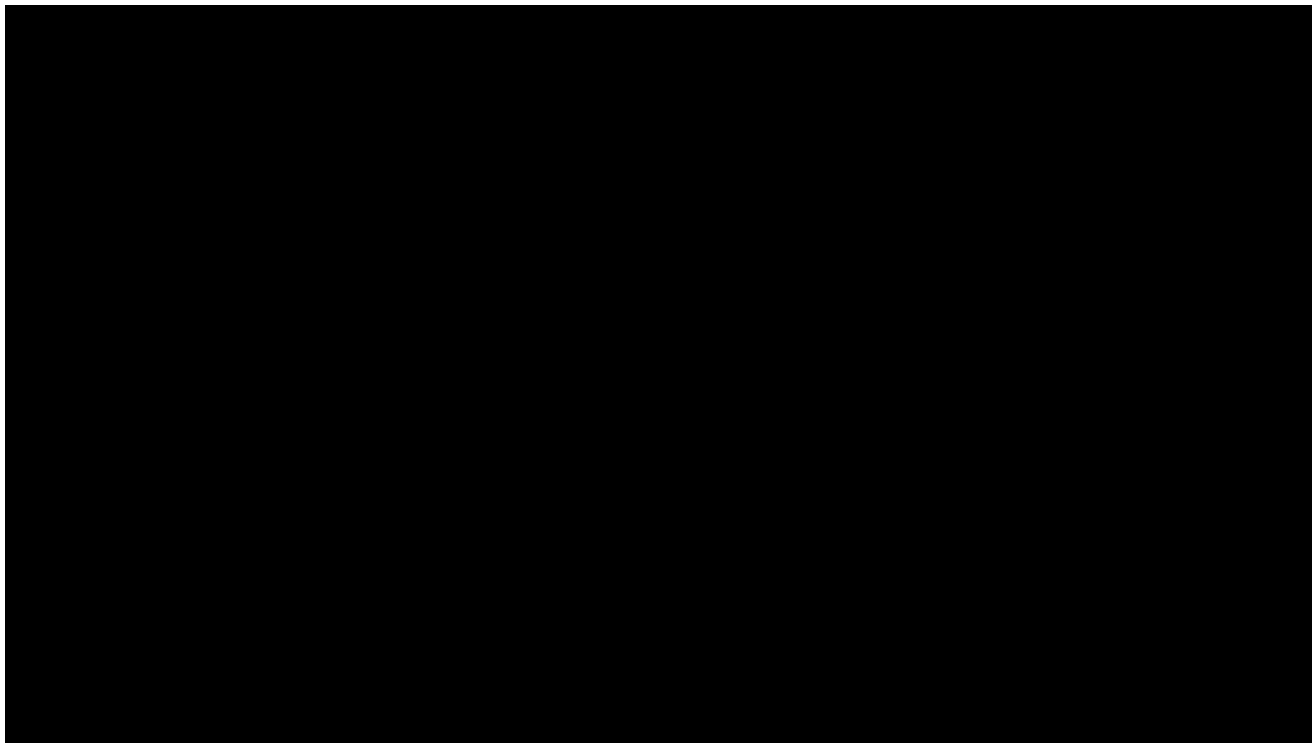
Percorso diagnostico-terapeutico



laparoscopic vs robotic

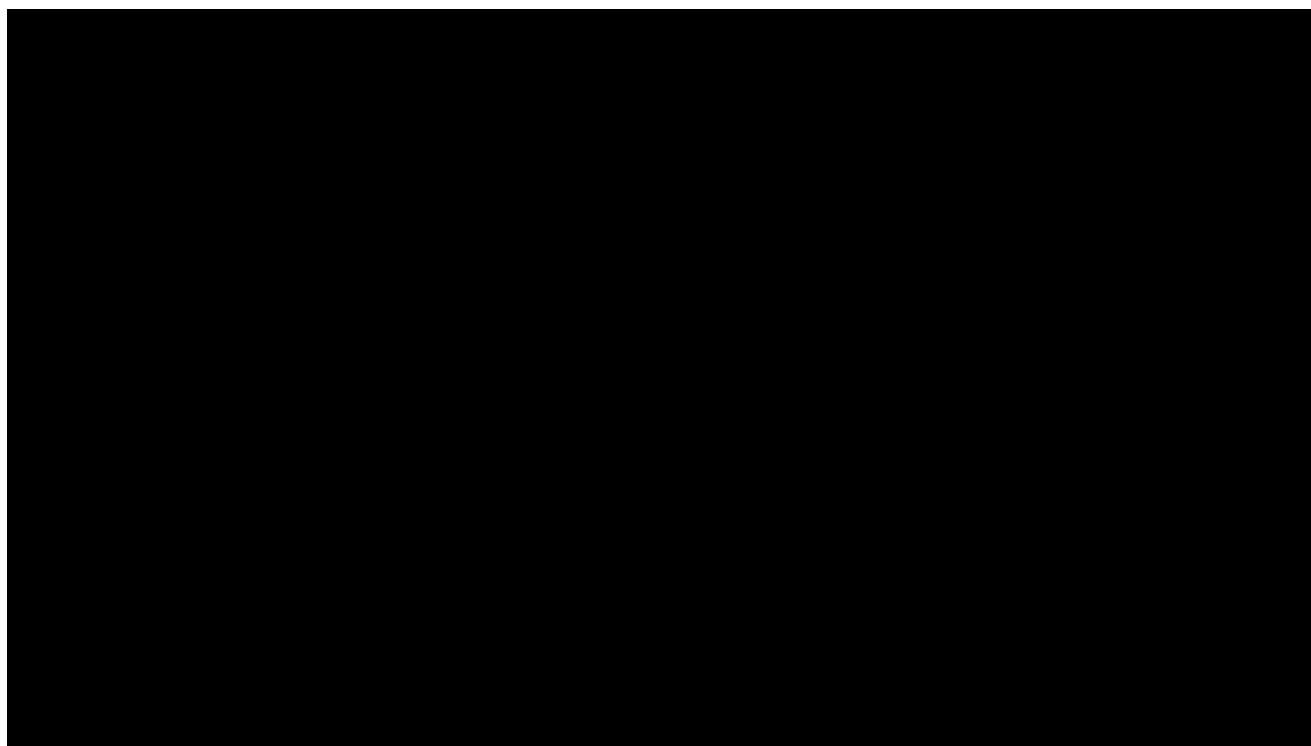


Gastrectomia oncologica laparoscopica



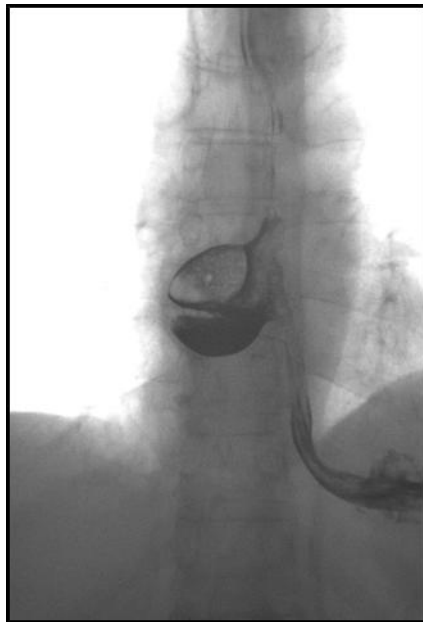


Chirurgia robot-assistita





Chirurgia esofagea robot-assistita





Ente Ospedaliero Cantonale

Chirurgia Mininvasiva

selezione dei pazienti
approccio multidisciplinare
tecnica mininvasiva
follow-up condiviso

Davide.laregina@eoc.ch